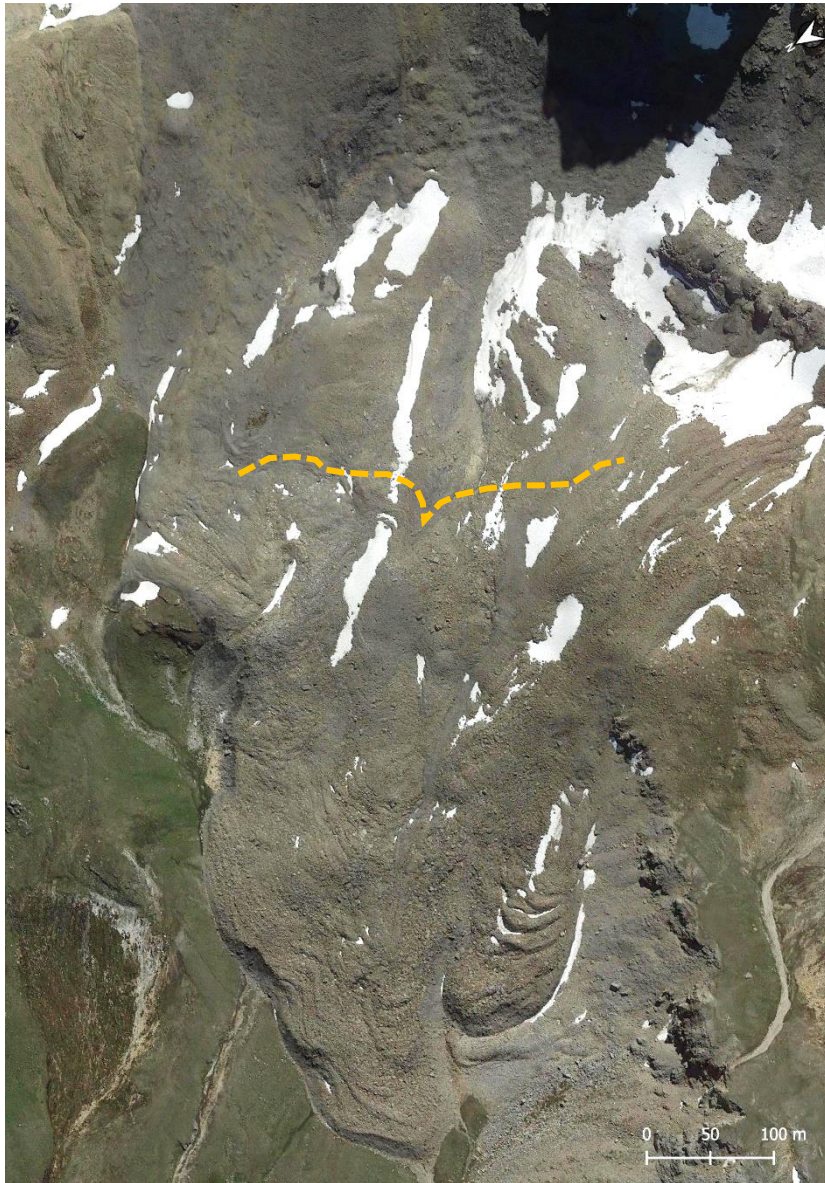


Rock glacier activity / Active

Comment:

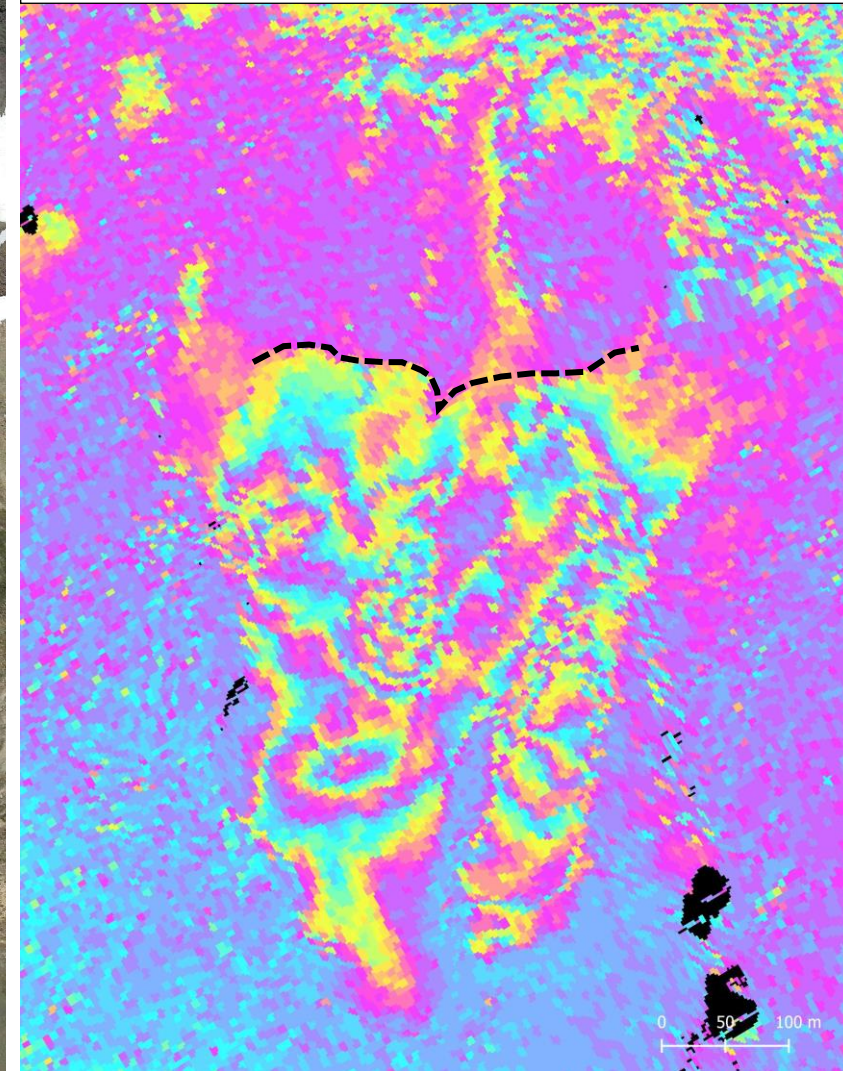
Active talus-connected rock glacier with steep front and partly lateral margins both exposing fresh material. Most of the landform exhibits a motion rate of several decimeters per year (right) (one color fringe/cycle means a displacement rate of about 0.5 m/year in the line-of-sight (LOS) of the space-borne SAR sensor). See also ([14](#), [68](#)).

Becs-de-Bosson,
Switzerland
46.1737°N, 7.5105°E
2600-2800 m.a.s.l.



InSAR data : TSX 11 days
Descending mode
20140927-20141008

$-\pi$ 1,55cm $+\pi$



Supplementary material : <https://www.unifr.ch/geo/geomorphology/en/resources/study-sites/becs-de-bosson.html>



UNIFR
UNIVERSITÉ DE FRIBOURG
UNIVERSITÄT FREIBURG