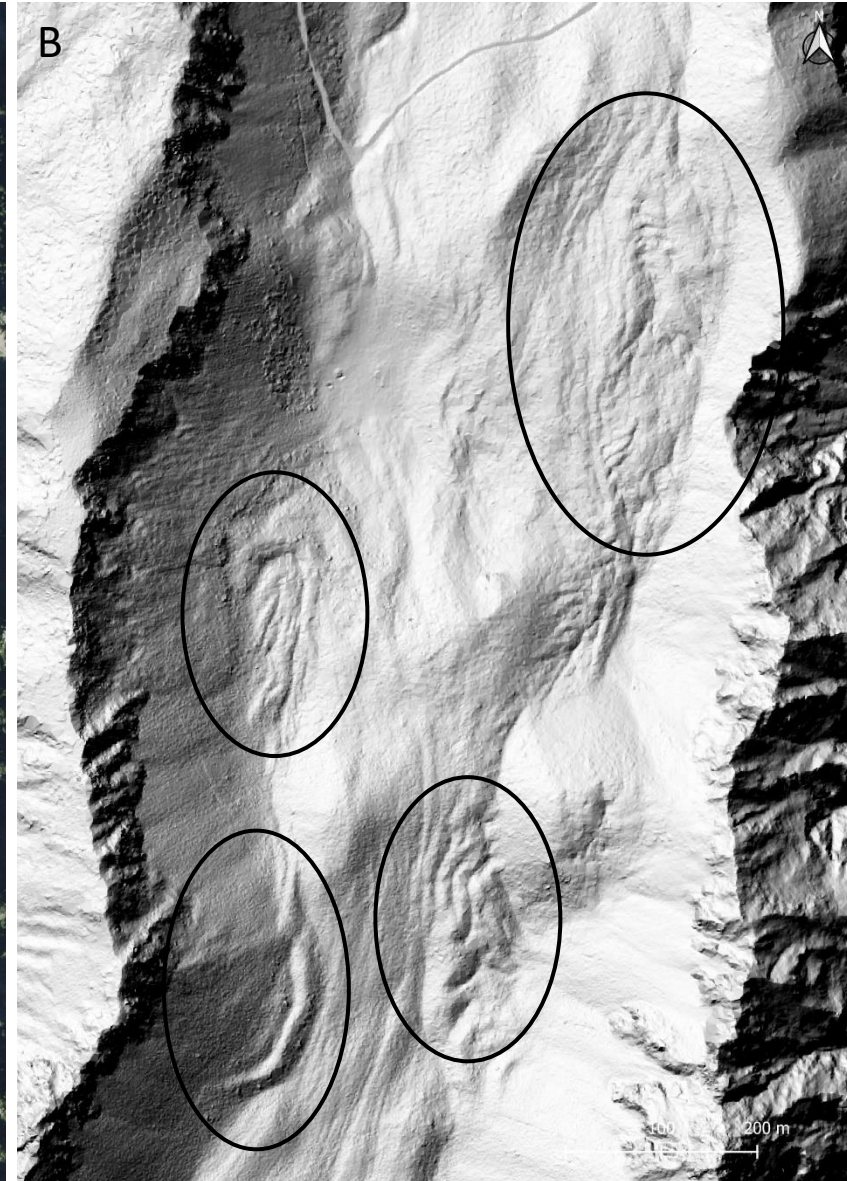


Rock glacier activity / Relict

Comment:

Relict rock glaciers masked by forest (A) remotely detectable only with the help of an airborne Lidar-based high-resolution DEM hillshade (B).

Dreveneuse, Switzerland
46.2660°N, 6.8910°E
1500-1700 m.a.s.l



Supplementary material : <https://www.unifr.ch/geo/geomorphology/en/resources/study-sites/dreveneuse.html>

