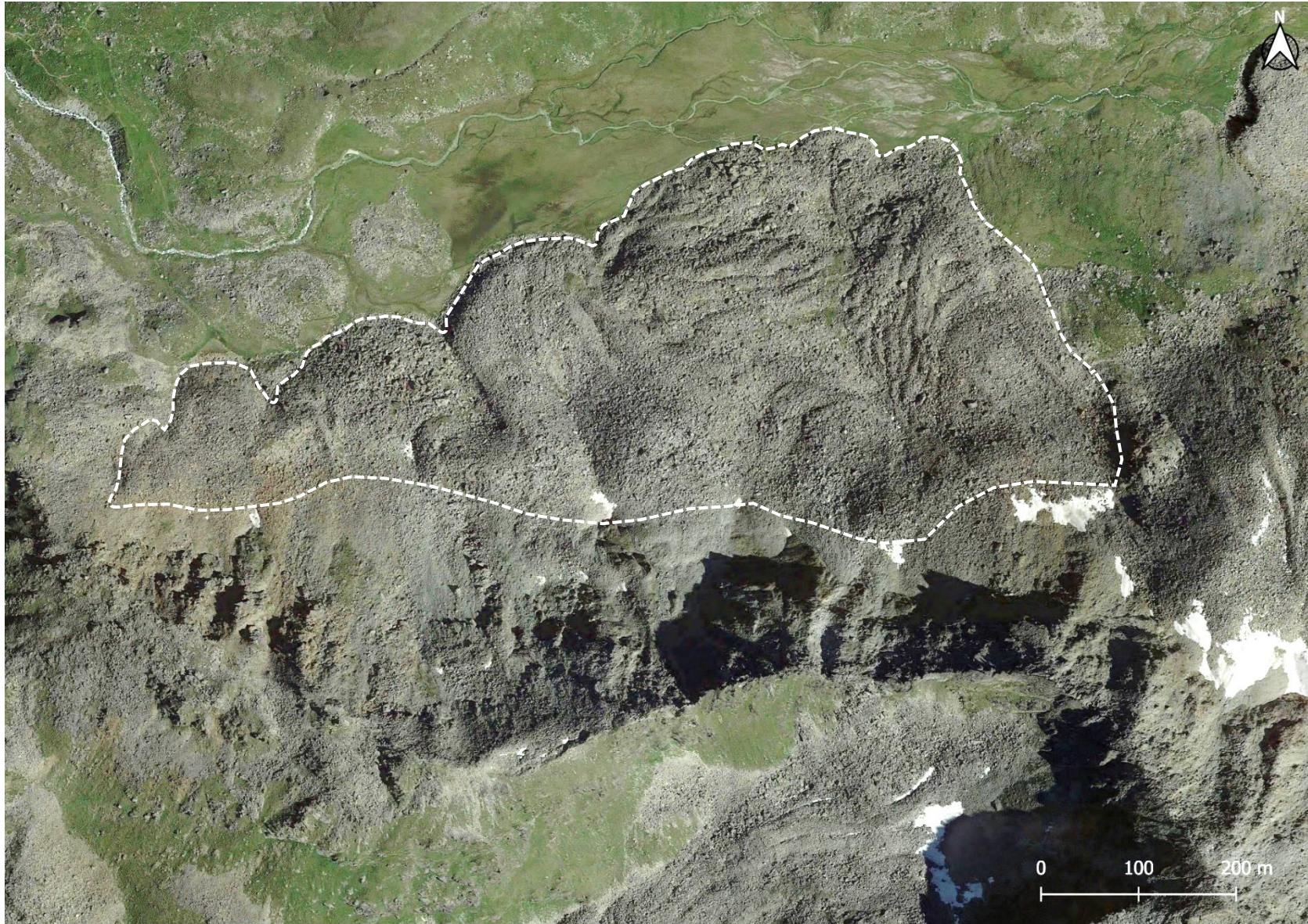


Complex rock glacier unit | Mono-unit rock glacier system

Comment:

Complex rock glacier unit due to the occurrence of various coalescent and partly superimposed lobes, building up a mono-unit rock glacier system. Without the use of kinematic data, there is no sufficient geomorphological evidence to unambiguously separate units. If so, however, the rock glacier system will become classified as multi-unit.



Barmé, Switzerland
46.1181°N, 7.6589°E
2500-2700 m.a.s.l.



**UNI
FR**
UNIVERSITÉ DE FRIBOURG
UNIVERSITÄT FREIBURG