

# Spatial connection to the upslope unit / Talus-connected

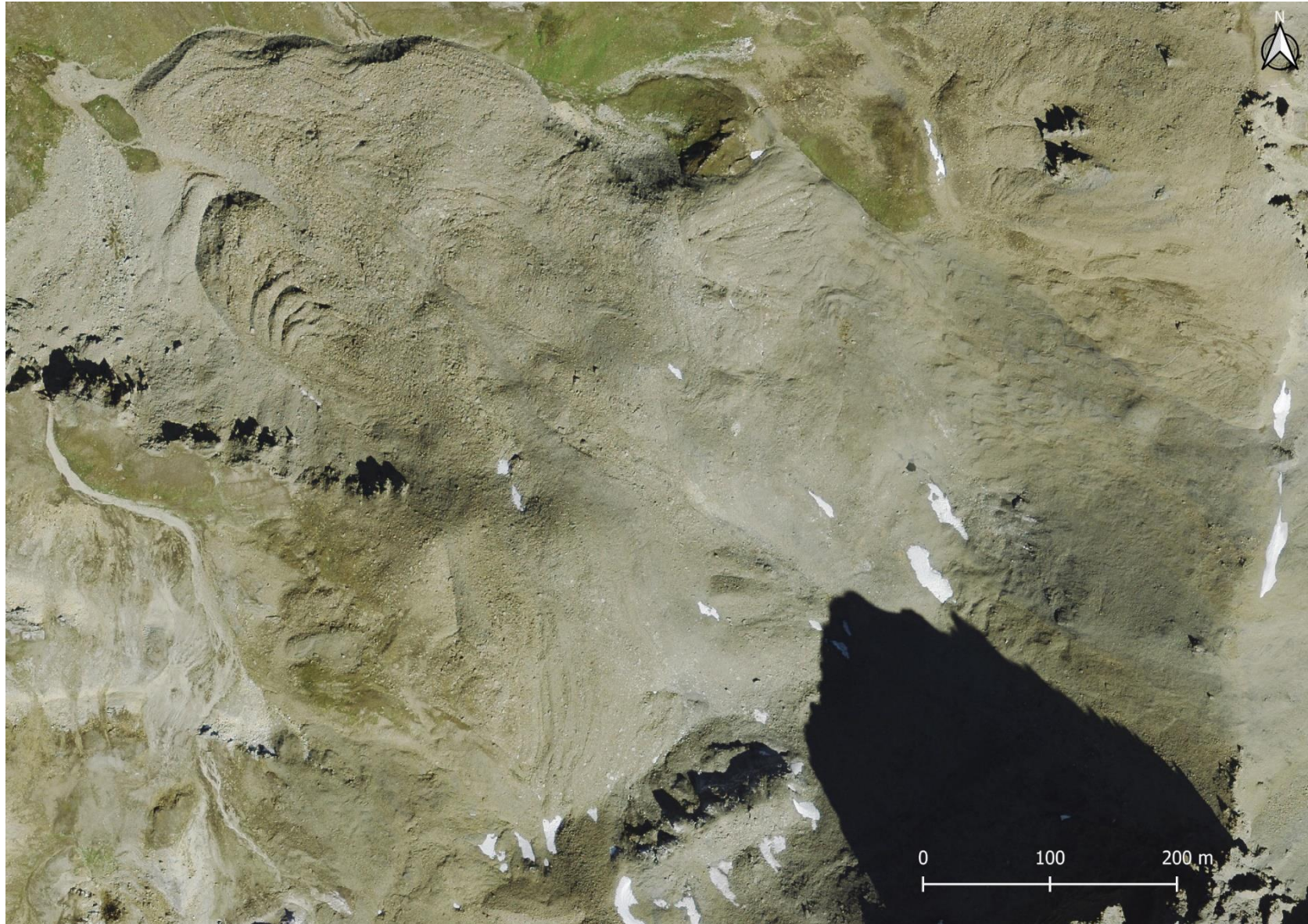
## Comment:

Episodic development of a small glacier has occurred along with the landform history in the area connecting the talus slope to the rock glacier. The current absence of a glacier implies a lack of efficient sedimentary connection with the upslope unit. The rock glacier is still, however, classified as talus-connected.

See also (68).

Site visited during the IPA Action Group Workshop I in September 2019.

Becs-de-Bosson, Switzerland  
46.1737°N, 7.5105°E  
2600-2800 m.a.s.l.



Supplementary material : <https://www.unifr.ch/geo/geomorphology/en/resources/study-sites/becs-de-bosson-fr.html>

